

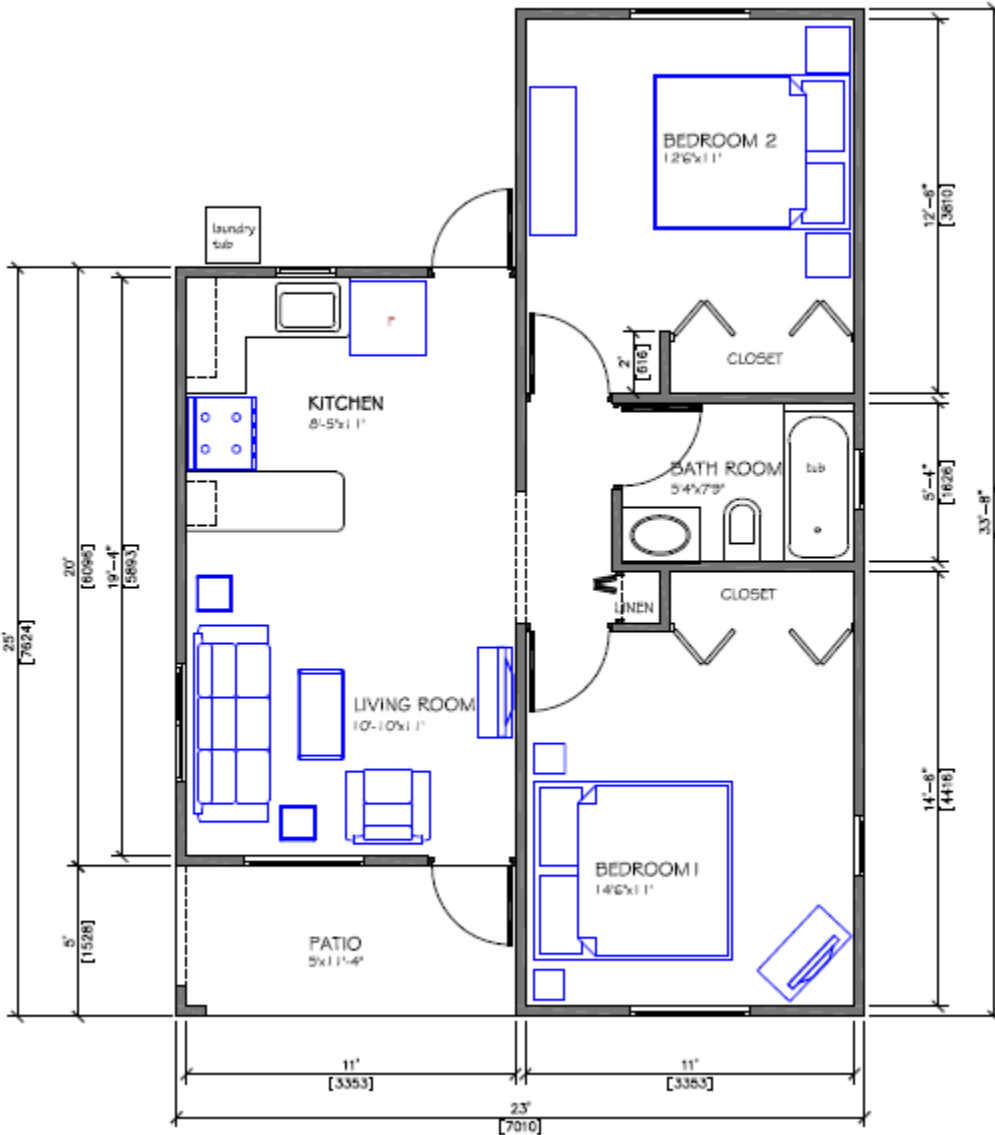
# Phoenix Park Village Housing Development

Bernard Lodge/  
Greater Portmore

2 Bedroom / 1 Bathroom

**Floor Plan - 675 SF or 62.71 SM**

Min. Lot size - 3,500 SF or 325.2 SM



## The House Features:

- Concrete Roof
  - Solar Water Heater
  - Alarm System
  - Ceramic Tiles
  - Single glazed glass windows with insect screen
  - Kitchen cupboards with sink
  - Bedroom closets
  - Linen closet
  - Bathtub, toilet, basin with under counter cabinet and medicine cabinet ( Grade A sanitary fixtures )
  - Exterior Laundry tub
  - Stone Driveway
  - Gated Community
- Disclaimer:  
Illustrations in blue are not included.