

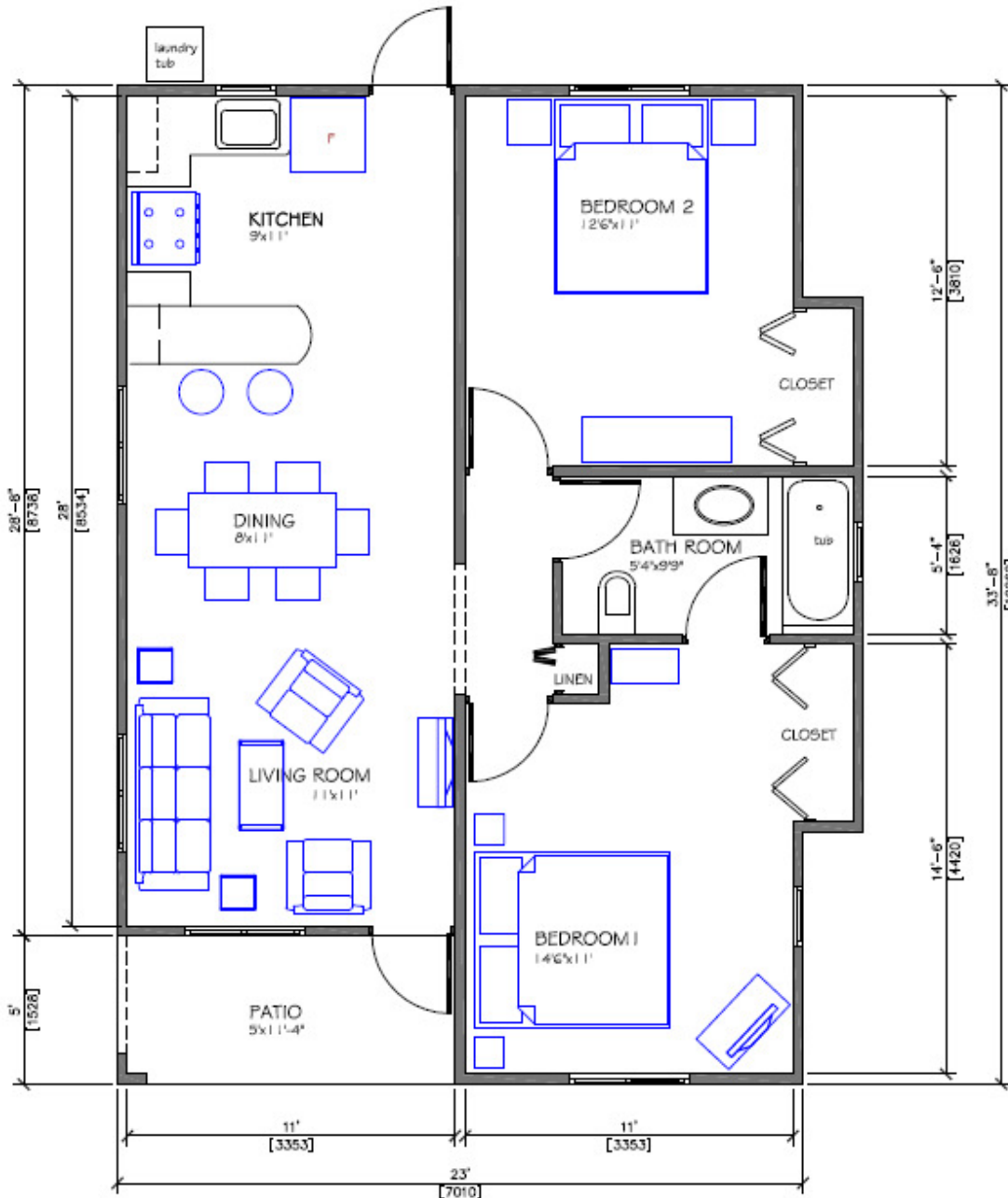
Phoenix Park Village Housing Development

Bernard Lodge/
Greater Portmore
Phase 4

2 Bedroom / 1 Bathroom

Floor Plan - 810 SF or 75.25 SM

Min. Lot size - 3,500 SF or 325.2 SM



The House Features:

- Concrete Roof
- Solar Water Heater
- Alarm System
- Ceramic Tiles
- Single glazed glass windows with insect screen
- Kitchen cupboards with sink
- Bedroom closets
- Linen closet
- Bathtub, toilet, basin with under counter cabinet and medicine cabinet (Grade A sanitary fixtures)
- Exterior Laundry tub
- Stone Driveway
- Gated Community

Disclaimer:
Illustrations in blue are not included.