

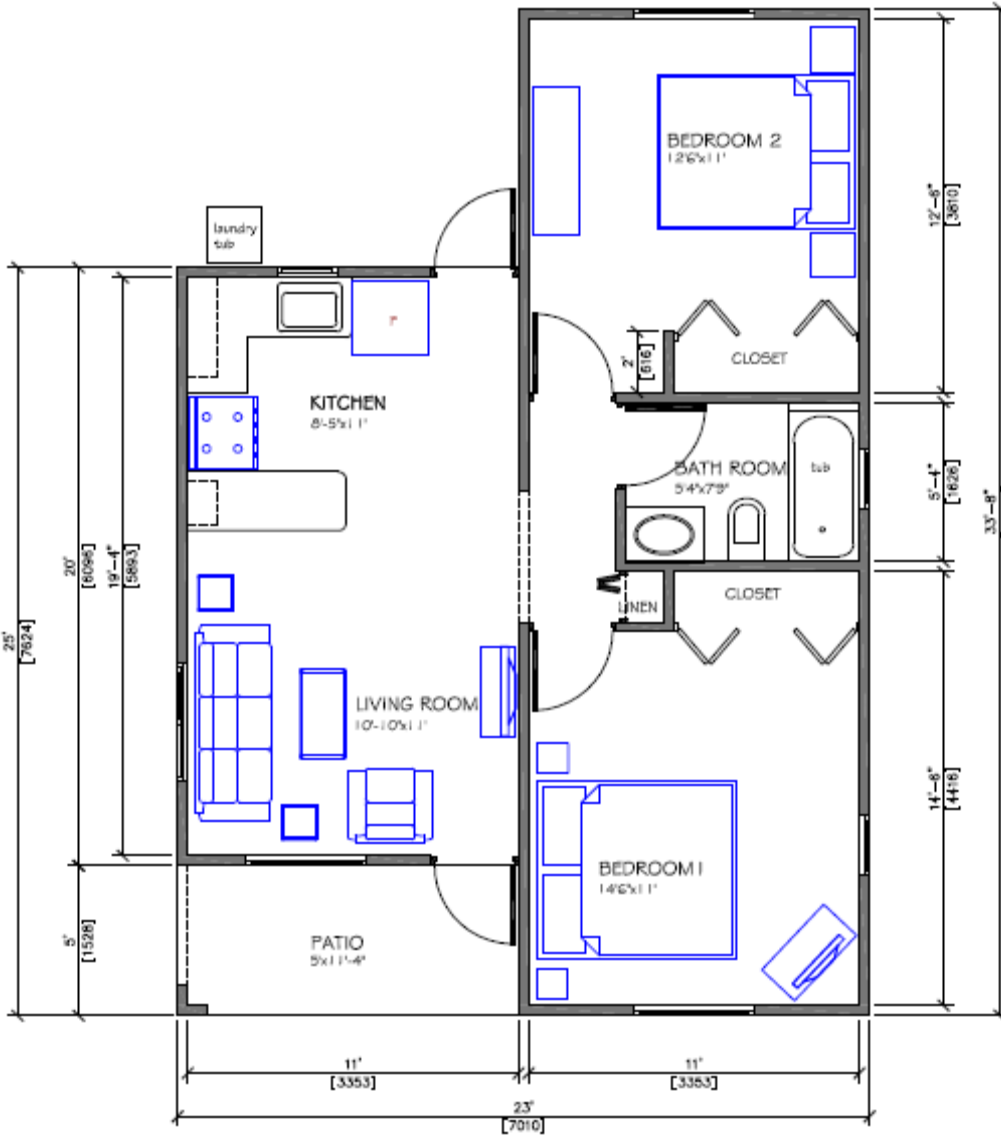
Phoenix Park Village Housing Development

Bernard Lodge/
Greater Portmore
Phase 4

2 Bedroom / 1 Bathroom

Floor Plan - 675 SF or 62.71 SM

Min. Lot size - 3,500 SF or 325.2 SM



The House Features:

- Concrete Roof
 - Solar Water Heater
 - Alarm System
 - Ceramic Tiles
 - Single glazed glass windows with insect screen
 - Kitchen cupboards with sink
 - Bedroom closets
 - Linen closet
 - Bathtub, toilet, basin with under counter cabinet and medicine cabinet (Grade A sanitary fixtures)
 - Exterior Laundry tub
 - Stone Driveway
 - Gated Community
- Disclaimer:
Illustrations in blue are not included.