

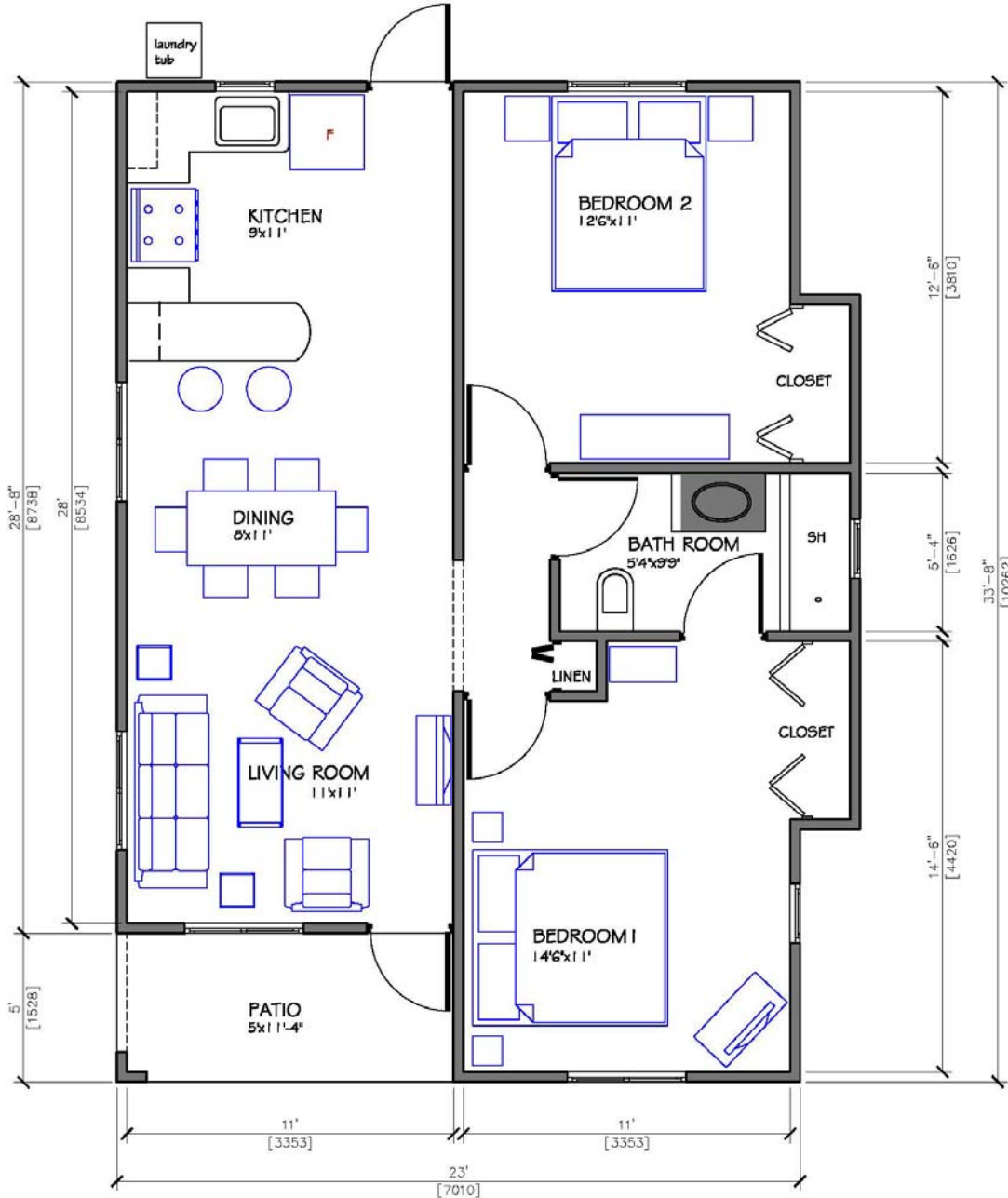
Phoenix Park Village Housing Development

Bernard Lodge/
Greater Portmore
Phase 5

2 Bedroom / 1 Bathroom

Floor Plan - 813 SF or 75.53 SM

Min. Lot size - 4,000 SF or 372 SM



The House Features:

- Concrete Roof
- Solar Water Heater
- Alarm System
- Ceramic Tiles
- Single glazed glass windows with insect screen
- Kitchen cupboards with sink
- Bedroom closets
- Linen closet
- Standing shower, toilet, basin with under counter cabinet and medicine cabinet
- Exterior Laundry tub
- Stone Driveway
-
- Gated Community

Disclaimer: Illustrations in blue are not included.