

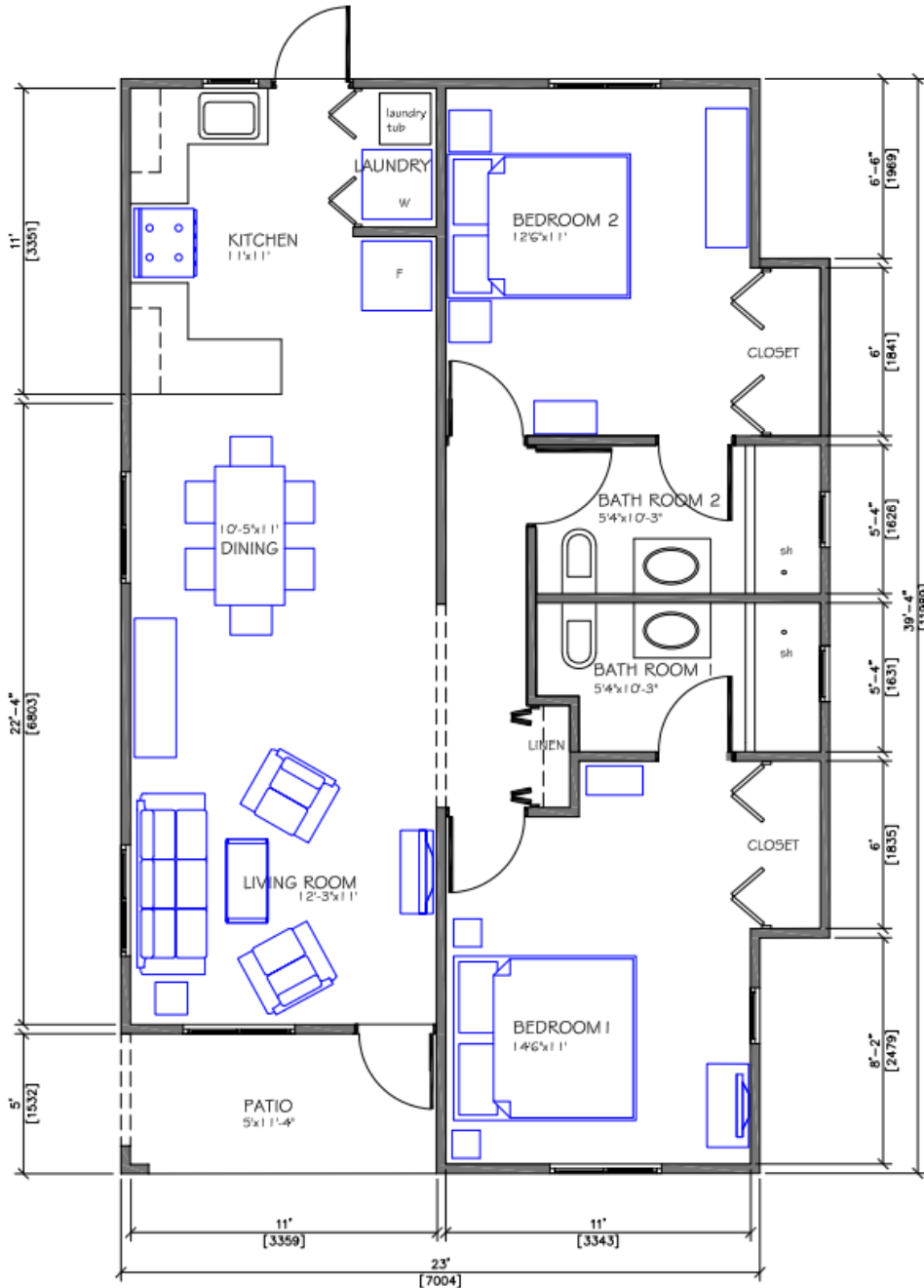
Phoenix Park Village Housing Development

Bernard Lodge/
Greater Portmore
Phase 5

2 Bedroom / 2 Bathroom

Floor Plan - 960 SF or 89.2 SM

Min. Lot size - 5,000 SF or 464.51 SM



The House Features:

- Concrete Roof
 - Solar Water Heater
 - Alarm System
 - Ceramic Tiles
 - Single glazed glass windows with insect screen
 - Kitchen cupboards with sink
 - Bedroom closets
 - Linen closet
 - Bathtub, toilet, basin with under counter cabinet and medicine cabinet (Grade A sanitary fixtures)
 - Interior Laundry area with laundry tub
 - Paved Driveway
 - Gated Community
- Disclaimer:
Illustrations in blue are not included.