

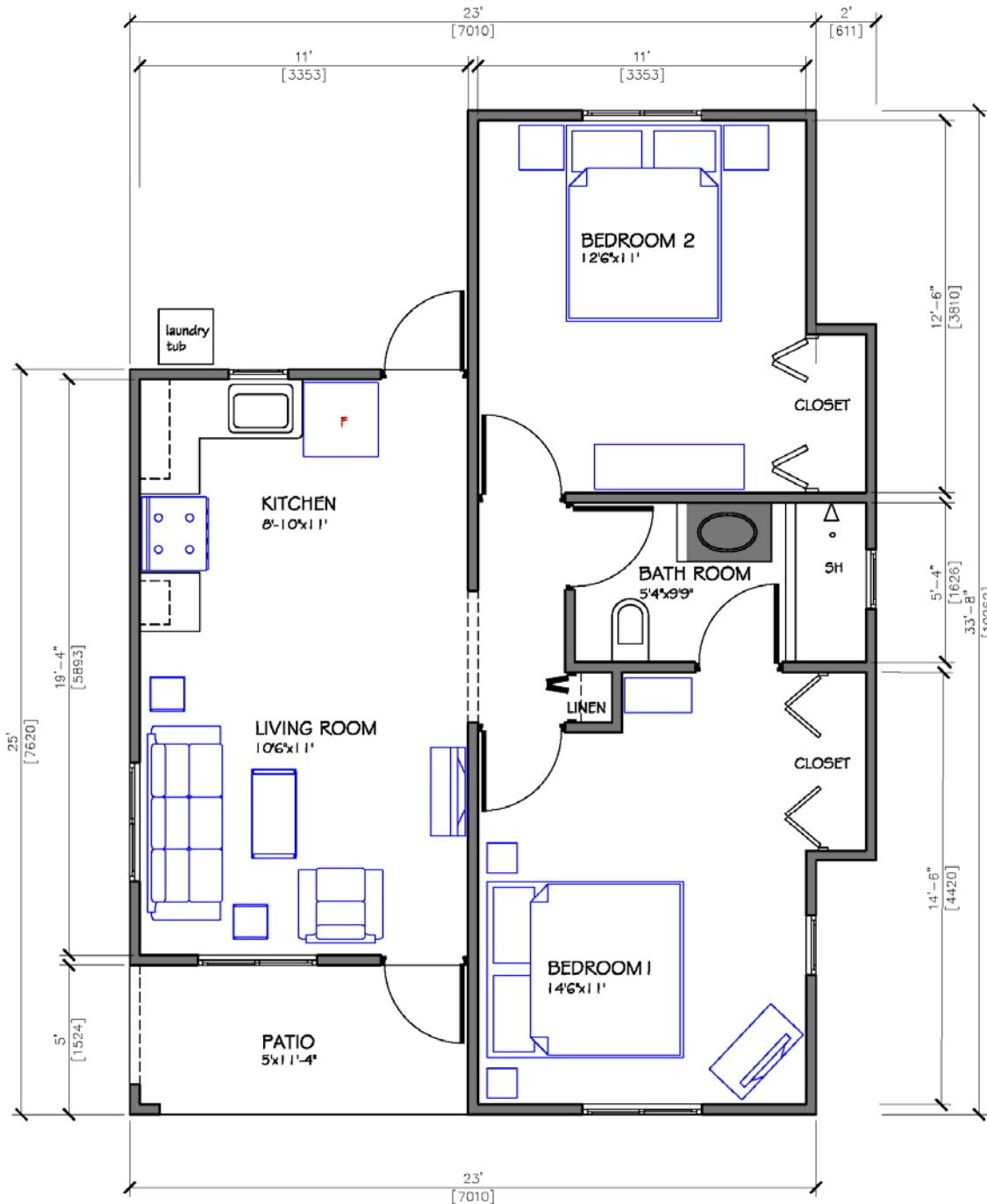
# Phoenix Park Village 2 Housing Development

Bernard Lodge/  
Greater Portmore  
Phase 1

2 Bedroom / 1 Bathroom

Floor Plan - 710 SF or 65.9 SM

Min. Lot size - 2,500 SF or 232.25 SM



## The House Features:

- Concrete Roof
- Solar Water Heater
- Alarm System
- Ceramic Tiles
- Single glazed glass windows with insect screen
- Kitchen cupboards with sink
- Bedroom closets
- Linen closet
- Standing shower, toilet, basin with under counter cabinet and medicine cabinet
- Exterior laundry tub
- Stone Driveway
- Gated Community

### Disclaimer:

Illustrations in blue are not included.

Gore Developments Limited reserves the right to make changes as we deem necessary.